



Installing Actuate BIRT Designer Professional

Information in this document is subject to change without notice. Examples provided are fictitious. No part of this document may be reproduced or transmitted in any form, or by any means, electronic or mechanical, for any purpose, in whole or in part, without the express written permission of Actuate Corporation.

© 1995 - 2015 by Actuate Corporation. All rights reserved. Printed in the United States of America.

Contains information proprietary to:
Actuate Corporation, 951 Mariners Island Boulevard, San Mateo, CA 94404

www.opentext.com
www.actuate.com

The software described in this manual is provided by Actuate Corporation under an Actuate License agreement. The software may be used only in accordance with the terms of the agreement. Actuate software products are protected by U.S. and International patents and patents pending. For a current list of patents, please see <http://www.actuate.com/patents>.

Actuate Corporation trademarks and registered trademarks include:

Actuate, ActuateOne, the Actuate logo, Archived Data Analytics, BIRT, BIRT 360, BIRT Analytics, The BIRT Company, BIRT Content Services, BIRT Data Analyzer, BIRT for Statements, BIRT iHub, BIRT Metrics Management, BIRT Performance Analytics, Collaborative Reporting Architecture, e.Analysis, e.Report, e.Reporting, e.Spreadsheet, Encyclopedia, Interactive Viewing, OnPerformance, The people behind BIRT, Performancesoft, Performancesoft Track, Performancesoft Views, Report Encyclopedia, Reportlet, X2BIRT, and XML reports.

Actuate products may contain third-party products or technologies. Third-party trademarks or registered trademarks of their respective owners, companies, or organizations include:

Mark Adler and Jean-loup Gailly (www.zlib.net): zlib. Adobe Systems Incorporated: Flash Player, Source Sans Pro font. Amazon Web Services, Incorporated: Amazon Web Services SDK. Apache Software Foundation (www.apache.org): Ant, Axis, Axis2, Batik, Batik SVG library, Commons Command Line Interface (CLI), Commons Codec, Commons Lang, Commons Math, Crimson, Derby, Hive driver for Hadoop, Kafka, log4j, Pluto, POI ooxml and ooxml-schema, Portlet, Shindig, Struts, Thrift, Tomcat, Velocity, Xalan, Xerces, Xerces2 Java Parser, Xerces-C++ XML Parser, and XML Beans. Daniel Bruce (www.entypo.com): Entypo Pictogram Suite. Castor (www.castor.org), ExoLab Project (www.exolab.org), and Intalio, Inc. (www.intalio.org): Castor. Alessandro Colantonio: CONCISE Bitmap Library. d3-cloud. Day Management AG: Content Repository for Java. Dygraphs Gallery. Eclipse Foundation, Inc. (www.eclipse.org): Babel, Data Tools Platform (DTP) ODA, Eclipse SDK, Graphics Editor Framework (GEF), Eclipse Modeling Framework (EMF), Jetty, and Eclipse Web Tools Platform (WTP). Bits Per Second, Ltd. and Graphics Server Technologies, L.P.: Graphics Server. Dave Gandy: Font Awesome. Gargoyle Software Inc.: HtmlUnit. GNU Project: GNU Regular Expression. Google Charts. Groovy project (groovy.codehaus.org): Groovy. Guava Libraries: Google Guava. HighSlide: HighCharts. headjs.com: head.js. Hector Project: Cassandra Thrift, Hector. Jason Hsueth and Kenton Varda (code.google.com): Protocol Buffer. H2 Database: H2 database. IDAutomation.com, Inc.: IDAutomation. IDRolutions Ltd.: JPedal JBIG2. InfoSoft Global (P) Ltd.: FusionCharts, FusionMaps, FusionWidgets, PowerCharts. InfoVis Toolkit. Matt Inger (sourceforge.net): Ant-Contrib. Matt Ingenthron, Eric D. Lambert, and Dustin Sallings (code.google.com): Spymemcached. International Components for Unicode (ICU): ICU library. JCraft, Inc.: JSch. jQuery: jQuery, jQuery Sparklines. Yuri Kanivets (code.google.com): Android Wheel gadget. LEAD Technologies, Inc.: LEADTOOLS. The Legion of the Bouncy Castle: Bouncy Castle Crypto APIs. Bruno Lowagie and Paulo Soares: iText. Membrane SOA Model. MetaStuff: dom4j. Microsoft Corporation (Microsoft Developer Network): CompoundDocument Library. Mozilla: Mozilla XML Parser. MySQL Americas, Inc.: MySQL Connector/J. Netscape Communications Corporation, Inc.: Rhino. NodeJS. nullsoft project: Nullsoft Scriptable Install System. OOPS Consultancy: XMLTask. OpenSSL Project: OpenSSL. Oracle Corporation: Berkeley DB, Java Advanced Imaging, JAXB, Java SE Development Kit (JDK), Jstl, Oracle JDBC driver. PostgreSQL Global Development Group: pgAdmin, PostgreSQL, PostgreSQL JDBC driver. Progress Software Corporation: DataDirect Connect XE for JDBC Salesforce, DataDirect JDBC, DataDirect ODBC. Quality Open Software: Simple Logging Facade for Java (SLF4J), SLF4J API and NOP. Raphael. RequireJS. Rogue Wave Software, Inc.: Rogue Wave Library SourcePro Core, tools.h++. Sencha Inc.: Extjs, Sencha Touch. Shibboleth Consortium: OpenSAML, Shibboleth Identity Provider. Matteo Spinelli: iscroll. StAX Project (stax.codehaus.org): Streaming API for XML (StAX). Sam Stephenson (prototype.conio.net): prototype.js. SWFObject project (code.google.com): SWFObject. ThimbleWare, Inc.: JMemcached. Twitter: Twitter Bootstrap. VMware: Hyperic SIGAR. Woodstox Project (woodstox.codehaus.org): Woodstox Fast XML processor (wstx-asl). World Wide Web Consortium (W3C) (MIT, ERCIM, Keio), Flute, JTIty, Simple API for CSS. XFree86 Project, Inc.: (www.xfree86.org): xvfb. ZXing Project (code.google.com): ZXing.

All other brand or product names are trademarks or registered trademarks of their respective owners, companies, or organizations.

Document No. 141215-2-745510 June 19, 2015


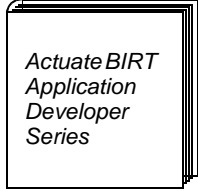
Contents

Introduction	iii
About Actuate BIRT Designer Professional documentation	iii
Obtaining documentation	v
Obtaining late-breaking information and documentation updates	v
Obtaining technical support	vi
Supported and obsolete products	vi
 Chapter 1	
Installing Actuate BIRT Designer Professional	1
About Actuate BIRT Designer Professional	2
Installing Actuate BIRT Designer Professional	2
About the BIRT Designer Professional eclipse directory	7
Replacing the datasources.xml file in your BIRT Designer Professional installation	7
 Index	9

About Actuate BIRT Designer Professional documentation



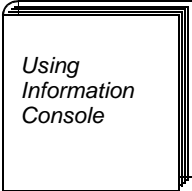

The online documentation includes the materials described in Table I-1. You can obtain HTML and PDF files from the Actuate web site. These documentation files are updated in response to customer requirements.

Table I-1 Product documentation

For information about this topic	See the following resource
Installing Actuate BIRT Designer Professional	 <p><i>Installing Actuate BIRT Designer Professional</i></p>
Designing a BIRT application, such as a report or dashboard Using interactive components such as gadgets and charts Scripting event handlers in a report design Using Actuate JavaScript API to customize access to reports and report components Deploying BIRT reports to Actuate BIRT iHub, configuring data source connections and fonts on iHub, using encryption	 <p><i>Actuate BIRT Application Developer Series</i></p>



(continues)

Table I-1 Product documentation (continued)

For information about this topic	See the following resource
<p>Creating data sources and data sets and binding data</p> <p>Accessing data in data objects, JDBC databases, NoSQL databases, flat files, XML files, web services, and Excel spreadsheets</p> <p>Creating data objects and accessing the data in a data object</p>	 <p><i>Provisioning Data</i></p>
<p>Accessing a BIRT information object and creating information object queries</p> <p>Creating and caching information objects</p> <p>Actuate SQL reference</p> <p>Configuring database types</p> <p>Mapping data types, functions, and operators</p>	 <p><i>Designing BIRT Information Objects</i></p>
<p>Viewing, navigating, and editing BIRT reports</p> <p>Formatting reports, organizing data, and hiding and filtering data in reports</p> <p>Modifying charts and cross tabs</p>	 <p><i>Using Information Console</i></p>
<p>Actuate web services and SOAP messaging overview</p> <p>Actuate Information Delivery API operations and data types reference</p> <p>Using Actuate JavaScript API to customize access to reports and report components</p> <p>Reference for configuring BIRT Viewer and BIRT Viewer URIs</p> <p>Using Java Report Server Security Extension (RSSE) APIs</p> <p>Using logging, performance monitoring, and archiving features</p> <p>Customizing the Actuate software installation process</p>	 <p><i>Integrating Applications into BIRT iHub</i></p>
<p>Late-breaking information and documentation updates</p>	<p>Release notes and updated localization files posted on Actuate Support</p>

The printed documentation for Actuate BIRT Designer Professional includes the development and programming materials described in Table I-2.

Table I-2 Development and programming documentation

For information about this topic	See the following resource
Developing and customizing reports using BIRT Designer Professional Planning report designs, and laying out and formatting reports Accessing data, building charts, and preparing reports for international data Enhancing reports using interactivity, shared libraries, and localized text	 <p><i>BIRT: A Field Guide</i></p>
Installing and deploying BIRT Understanding BIRT architecture Building and deploying customized reports using scripting and BIRT APIs, integrating BIRT functionality into applications, and working with the BIRT extension framework	 <p><i>Integrating and Extending BIRT</i></p>

Obtaining documentation

Actuate provides technical documentation in PDF and HTML formats. You can download PDF or view HTML versions of the documentation from www.actuate.com/documentation.

Obtaining late-breaking information and documentation updates

The release notes contain late-breaking news about Actuate products and features. The release notes are available on the Actuate Support site at the following URL:

<http://support.actuate.com/documentation/releasenotes>

If you are a new user, you must first register on the site and log in to view the release notes. <http://developer.actuate.com> also provides product update information.

Obtaining technical support

You can contact Customer Support by e-mail or telephone. For contact information, go to the following URL:

<http://www.actuate.com/services/support/contact-support.asp>

Supported and obsolete products

The Actuate Support Lifecycle Policy and Supported Products Matrix are available on the Actuate Support web site at the following URL:

<http://support.actuate.com/documentation/spm>

1

Installing Actuate BIRT Designer Professional

This chapter contains the following topics:

- About Actuate BIRT Designer Professional
- Installing Actuate BIRT Designer Professional
- About the BIRT Designer Professional eclipse directory
- Replacing the datasources.xml file in your BIRT Designer Professional installation

About Actuate BIRT Designer Professional

Actuate BIRT Designer Professional is a report designer for report developers who want to use the functionality provided by Actuate Corporation that enhances the Eclipse BIRT Report Designer. Actuate BIRT Designer Professional installs the full Eclipse workbench. This chapter describes how to install Actuate BIRT Designer Professional.

Installing Actuate BIRT Designer Professional

You install Actuate BIRT Designer Professional using the installation wizard. The installation wizard:

- Asks you to accept or decline the license agreement
- Prompts you to set the install location
- Installs the Eclipse workbench into `BDPro\eclipse`
- Copies Actuate BIRT Designer Professional features into:
`BDPro\eclipse\features`
- Copies Actuate BIRT Designer Professional plug-ins and JAR files into:
`BDPro\eclipse\plugins`
- Creates an entry in the Start menu for BIRT Designer Professional.
The entry is BIRT Designer Professional and is under the BIRT iHub group.

Check with your computer administrator for the best location to install BIRT Designer Professional.

How to install on Microsoft Windows systems

You download BIRT Designer Professional from an Actuate electronic download site. To install BIRT Designer Professional, complete the following steps.

- 1 Download the version of BIRT Designer Professional that matches your operating system:
 - Download `ActuateBIRTDesignerProfessional-iHub31.exe` installation file if your computer uses a 32-bit version of Windows.
 - Download `ActuateBIRTDesignerProfessional_x86_64-iHub31.exe` installation file if your computer uses a 64-bit version of Windows.
- 2 Run the Actuate BIRT Designer Professional file. If you are asked to allow the program to make changes to your computer, choose yes.

- 3 In Installer Language, select the installation language for BIRT Designer Professional and choose OK, as shown in Figure 1-1.



Figure 1-1 Selecting the installation language

- 4 A welcome message appears, as shown in Figure 1-2. Choose Next.

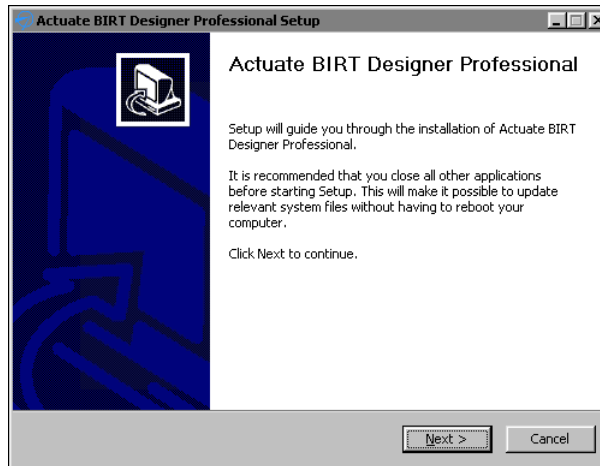


Figure 1-2 Welcome message

- 5 Read and accept the license agreement. Choose I Agree.
- 6 Accept the default destination folder or provide a different location. Then, choose Install, as shown in Figure 1-3.

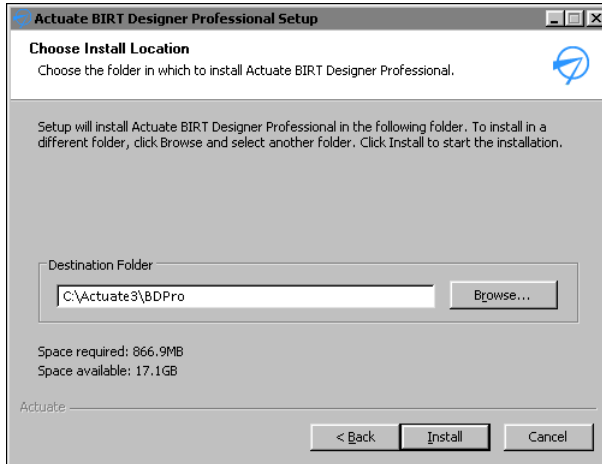


Figure 1-3 Choosing the destination folder

Setup status appears, providing you with information as the installation progresses. To show installation details, choose Show details.

- 7 When the installation completes, a message that BIRT Designer Professional installed successfully appears, as shown in Figure 1-4. To exit the installation wizard, choose Finish.

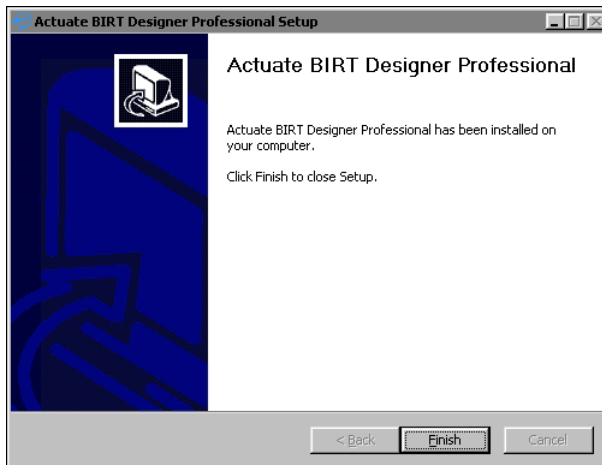


Figure 1-4 Exiting the installation wizard

The installation program installs the BIRT Designer Professional entry on the Start menu, as shown in Figure 1-5.

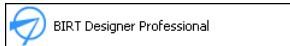


Figure 1-5 BIRT Designer Professional entry

The first time you run BIRT Designer Professional, you are asked to select a workspace folder to store your projects. You can create a new workspace or select an existing workspace. After selecting the workspace location, BIRT Designer Professional starts, as shown in Figure 1-6.

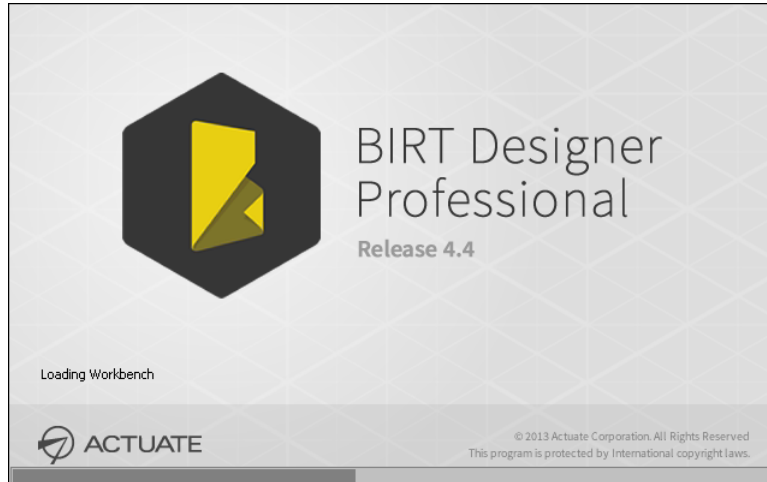


Figure 1-6 BIRT Designer Professional starting

How to set BIRT Designer Professional to run as an administrator on Windows 7

- 1 In Windows Explorer, navigate to the eclipse subdirectory of the BIRT Designer Professional installation directory. The location of this directory is:
`\BDPro\eclipse`
- 2 Right-click `eclipse.exe` and choose Properties.
- 3 On Properties, choose Compatibility.
- 4 On Compatibility, select Run this program as an administrator. Choose OK.

How to install BIRT Designer Professional on Mac OS X systems

Download BIRT Designer Professional from an Actuate electronic download site. Java for OS X is required and must be installed separately. You can download Java for OS X from the following URL:

<http://support.apple.com>

To install BIRT Designer Professional, complete the following steps.

- 1 Download `ActuateBIRTDesignerProfessional-macosx-cocoa-x86_64-iHub31.tar.gz`.

- 2 Select a location on your computer to store BIRT Designer Professional and uncompress the file you downloaded to this location. This creates the directory named BRDPro with an eclipse subdirectory.
- 3 In the eclipse subdirectory of BRDPro, run Eclipse, as shown in Figure 1-7.

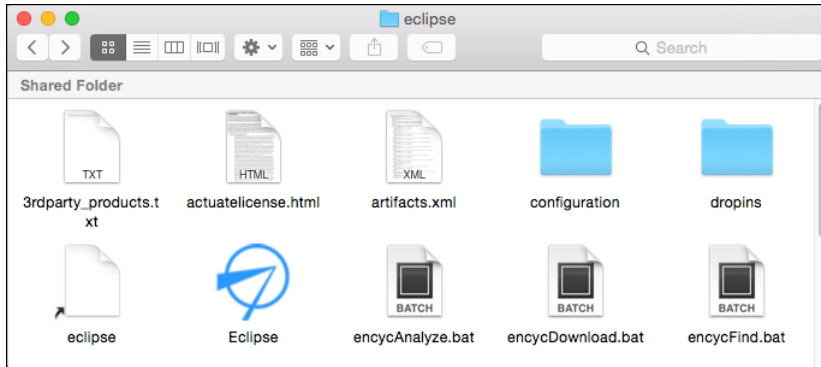


Figure 1-7 BIRT Designer Professional starting in Mac OS X

- If your Finder preferences enable the display of all file-name extensions, run the file named Eclipse.app.
- If you receive the message that Eclipse cannot open because it is downloaded from the internet or it is from an unidentified developer, press Ctrl and select Eclipse, and then choose Open, as shown in Figure 1-8.

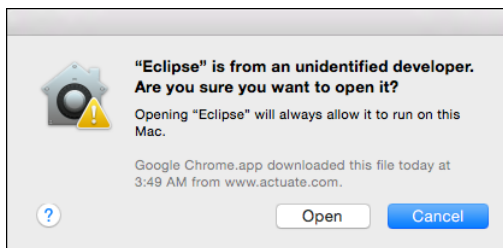


Figure 1-8 Opening BIRT Designer Professional while pressing Ctrl

The first time you run BIRT Designer Professional, you are asked to select a workspace folder to store your projects. You can create a new workspace or select an existing workspace.

To start BIRT Designer Professional from the command line, such as in a script or to use a specific Java JDK, run eclipse located in the eclipse folder. For example, the following command launches BIRT Designer Professional from the Mac OS X terminal:

```
./BDPro/eclipse/eclipse -vm /Library/Java/JavaVirtualMachines/  
jdk1.8.0_25.jdk/Contents/Home/bin/java
```

How to uninstall BIRT Designer Professional

To uninstall BIRT Designer Professional, on Windows, run the uninstaller from Control Panel→Programs. On MacOSX, remove the BRDPro directory. If your workspace is in a different location, you can optionally remove this directory to remove the files you created using BIRT Designer Professional.

About the BIRT Designer Professional eclipse directory

On completion of the install process, the eclipse subdirectory contains a fully functional version of BIRT that requires no further Eclipse downloads or installs. This eclipse subdirectory contains the full Eclipse workbench. The subdirectories of the eclipse directory include the following additional Actuate components to provide more functionality:

- Language properties files for standard templates
- A themes library
- ODA JDBC drivers
- Localized JAR files for various user interface components
- Eclipse features and JAR files that offer additional functionality, including:
 - The ability to publish a report to Actuate BIRT iHub, cloud server, or Actuate Marketplace
 - Actuate information object and Actuate data object data sources
 - HTML 5 charts and maps
 - BIRT dashboard designer
 - The ability to build BIRT application containers

Replacing the datasources.xml file in your BIRT Designer Professional installation

The IO Design perspective in 32-bit BIRT Designer Professional provides several preconfigured database types to support creating information objects including DB2, Oracle, and SQL Server. If you want to configure your own database types, for example Teradata, you must modify the file `datasources.xml`, which installs with both BIRT iHub and BIRT Designer Professional.

The `datasources.xml` file on the desktop must be the same as the `datasources.xml` file on iHub. If you have modified the `datasources.xml` file you are using with iHub, after installing BIRT Designer Professional, you must replace the BIRT

Designer Professional datasources.xml file with the iHub datasources.xml file.
The iHub datasources.xml file resides in:

```
$AC_SERVER_HOME/etc/data_integration
```

The BIRT Designer Professional datasources.xml file resides in:

```
<Actuate_HOME>\BDPro\eclipse\plugins  
  \com.actuate.ais.embeddable_<version>\Config\aisconfigfiles  
  \etc\data_integration
```


Index

A

- accessing
 - documentation v
- Actuate components 7
- Actuate Customer Support vi
- Actuate product information vi
- ActuateBIRTDesignerProfessional.exe 2
- administrator accounts 5

B

- BIRT Designer Professional v, 2, 7
- BIRT Designer Professional icon 4
- BIRT reports iv, 7
- BIRT Viewer iv

C

- configuration files 7
- connections iii
- custom database types 7
- Customer Support vi

D

- data sources iv, 7
- database types iv
- datasources.xml 7
- default directories 2
- deployments iii
- developers v
- documentation iii
 - downloading v
 - updating iii
- downloading
 - documentation files v
- drivers 7

E

- eclipse directory 7
- Eclipse workbench 2, 7
- encryption iii

F

- features v
- files
 - accessing help v
 - downloading documentation v

H

- help files v
- help. *See* online documentation
- HTML documentation iii, v

I

- iHub system files 7
- information objects iv, 7
- installation
 - BIRT Designer Professional 2–6

J

- JAR files 2, 7

L

- localized user interface components 7

M

- manuals. *See* documentation

O

- obsolete product information vi
- online documentation iii
 - downloading v
 - updating iii
- online help. *See* online documentation

P

- PDF documentation iii, v
- plug-ins 2
- product information vi
- product updates v
- programmers v
- publishing 7

Q

queries iv

R

release notes v

reports iv, 7

S

starting BIRT Designer Professional 2

Support Lifecycle Policy vi

Supported Products Matrix vi

system files (iHub) 7

T

technical support vi

templates 7

themes 7

U

uninstalling BIRT Designer Professional 7

updates (documentation) iii

updates (product) v

URLs

- Actuate product information vi

- Actuate technical support vi

- release notes v

user interface components 7

W

Windows systems 2, 5, 7

workbench (Eclipse) 2, 7